

O.C. 471/2005

October 5, 2005

The Lieutenant Governor in Council orders that

(a) effective July 1, 2005, the land described in Appendix A and shown on the sketch in Appendix B is separated from The County of Grande Prairie No. 1 and annexed to the City of Grande Prairie,

(b) any taxes owing to The County of Grande Prairie No. 1 at the end of June 30, 2005 in respect of the annexed land are transferred to and become payable to the City of Grande Prairie together with any lawful penalties and costs levied in respect of those taxes, and the City of Grande Prairie upon collecting those taxes, penalties and costs must pay them to The County of Grande Prairie No. 1, and

(c) the assessor for the City of Grande Prairie must assess, for the purpose of taxation in 2006, the annexed land and the assessable improvements to it.

For Information only

Recommended by: Minister of Municipal Affairs

Authority: Municipal Government Act  
(sections 126 and 138)

## APPENDIX A

### DETAILED DESCRIPTION OF THE LANDS SEPARATED

#### FROM THE COUNTY OF GRANDE PRAIRIE AND

#### ANNEXED TO THE CITY OF GRANDE PRAIRIE

ALL THAT PORTION OF THE SOUTHEAST QUARTER OF SECTION EIGHTEEN (18), TOWNSHIP SEVENTY-ONE (71), RANGE FIVE (5), WEST OF THE SIXTH MERIDIAN, CONTAINING 64.7 HECTARES (160 ACRES) MORE OR LESS INCLUDING:

PLAN 032 1407, ROAD WIDENING, CONTAINING 0.365 HECTARES (0.90 ACRES) MORE OR LESS;  
AND

THAT PART OF ROAD WIDENING PLAN 022 6492 COMMENCING AT A POINT 5.0 METERS WEST OF THE SOUTHEAST CORNER OF SECTION EIGHTEEN (18), TOWNSHIP SEVENTY-ONE (71), RANGE FIVE (5), WEST OF THE SIXTH MERIDIAN, CONTINUING WESTWARD FOR 75.698 METERS, EXTENDING NORTHEASTERLY FOR 94.932 METERS, NORTHERLY FOR 50.958 METERS, NORTHESTERLY FOR 25.744 METERS AND SOUTH TO THE POINT OF ORIGIN, CONTAINING 0.7480 HECTARES (1.85 ACRES) MORE OR LESS.

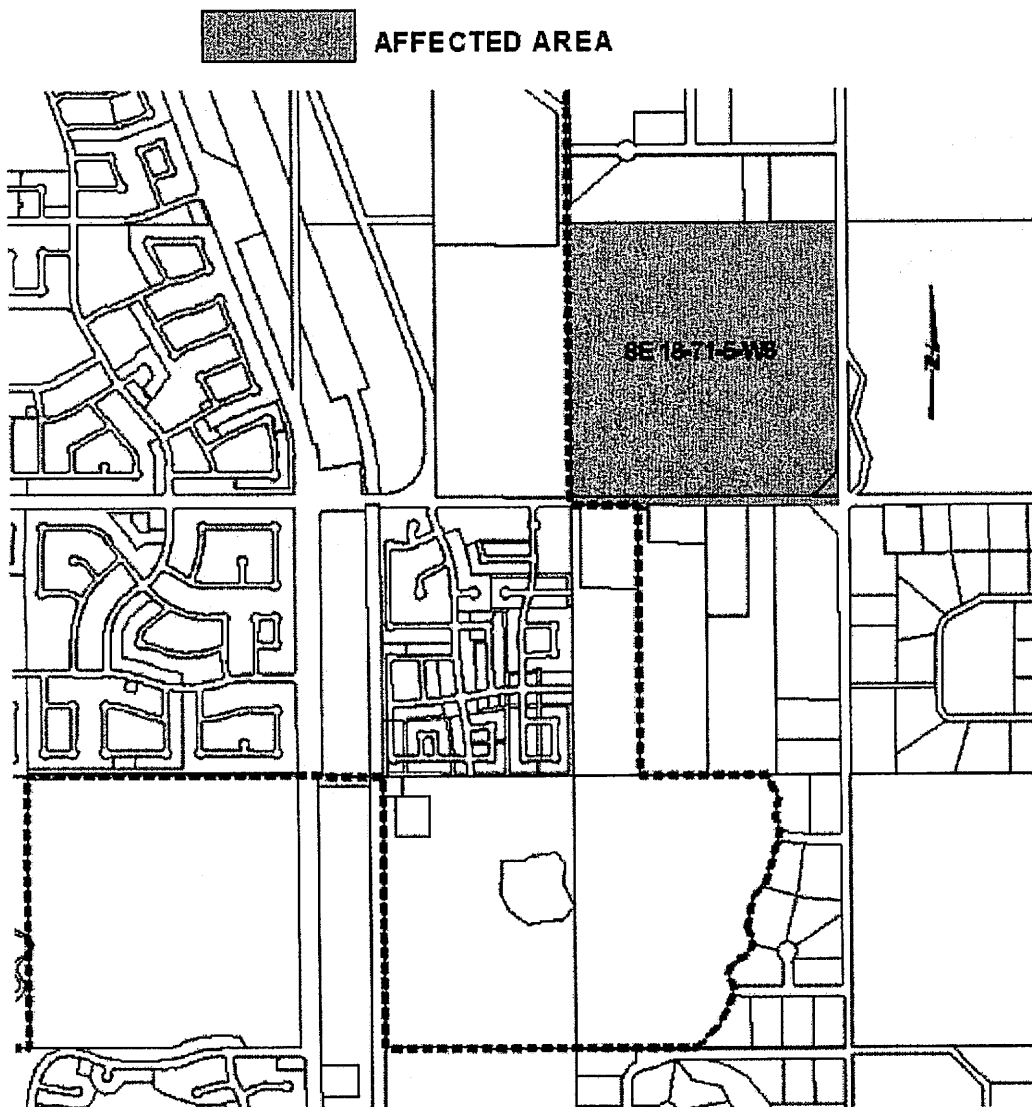
THE EAST-WEST ROAD ALLOWANCE ABUTTING THE SOUTH BOUNDARY OF THE SOUTHEAST QUARTER OF SECTION EIGHTEEN (18), TOWNSHIP SEVENTY-ONE (71), RANGE FIVE (5), WEST OF THE SIXTH MERIDIAN, KNOWN AS TOWNSHIP ROAD 712.

THAT PORTION OF THE NORTHEAST QUARTER OF SECTION SEVEN (7), TOWNSHIP SEVENTY-ONE (71), RANGE FIVE (5), WEST OF THE SIXTH MERIDIAN COMMENCING AT THE NORTHWEST CORNER OF THE QUARTER SECTION, EXTENDING SOUTH FOR 5.029 METERS, DUE EAST FOR 201.28 METERS, EXTENDING SOUTH 10.2 METERS, EAST 30 METERS, NORTH 10.2 METERS, THEN CONTINUING EASTWARD FOR A DISTANCE OF 572.8 METERS, THEN NORTH FOR 5.029 METERS TO A POINT IN THE NORTHEAST CORNER OF THE NORTHEAST QUARTER OF SECTION SEVEN (7), TOWNSHIP SEVENTY-ONE (71), RANGE FIVE (5), WEST OF THE SIXTH MERIDIAN, THEN WESTERLY TO THE POINT OF ORIGIN, CONTAINING 0.484 HECTARES (1.2 ACRES) MORE OR LESS, NOTED AS ROAD WIDENING.

**APPENDIX B**

**A SKETCH SHOWING THE GENERAL LOCATION OF AREAS  
ANNEXED TO THE CITY OF GRANDE PRAIRIE**

**AFFECTED AREA**



02034-0132-5

O.C. 405/2006

August 23, 2006

The Lieutenant Governor in Council orders that

(a) effective July 1, 2006, the land described in Appendix A and shown on the sketch in Appendix B is separated from The County of Grande Prairie No. 1 and annexed to the City of Grande Prairie,

(b) any taxes owing to The County of Grande Prairie No. 1 at the end of June 30, 2006 in respect of the annexed land are transferred to and become payable to the City of Grande Prairie together with any lawful penalties and costs levied in respect of those taxes, and the City of Grande Prairie upon collecting those taxes, penalties and costs must pay them to The County of Grande Prairie No. 1, and

(c) the assessor for the City of Grande Prairie must assess, for the purposes of taxation in 2007, the annexed land and the assessable improvements to it.

For Information only

Recommended by: Minister of Municipal Affairs

Authority: Municipal Government Act  
(sections 126 and 138)

**APPENDIX A**

**DETAILED DESCRIPTION OF THE LANDS SEPARATED  
FROM THE COUNTY OF GRANDE PRAIRIE NO. 1 AND  
ANNEXED TO THE CITY OF GRANDE PRAIRIE**

ALL THAT PORTION OF THE SOUTHWEST QUARTER OF SECTION SEVEN (7), TOWNSHIP SEVENTY-ONE (71), RANGE FIVE (5) WEST OF THE SIXTH MERIDIAN DESCRIBED AS:

RIGHT OF WAY AS SHOWN ON RAILWAY PLAN 5814NY

CONTAINING 11.76 HECTARES (29.05 ACRES) MORE OR LESS;

ROAD PLAN 4863TR

CONTAINING 3.26 HECTARES (8.06 ACRES) MORE OR LESS;

RAILWAY PLAN 952 0679

CONTAINING 3.238 HECTARES (8.00 ACRES) MORE OR LESS; AND

ROAD PLAN 952 3830

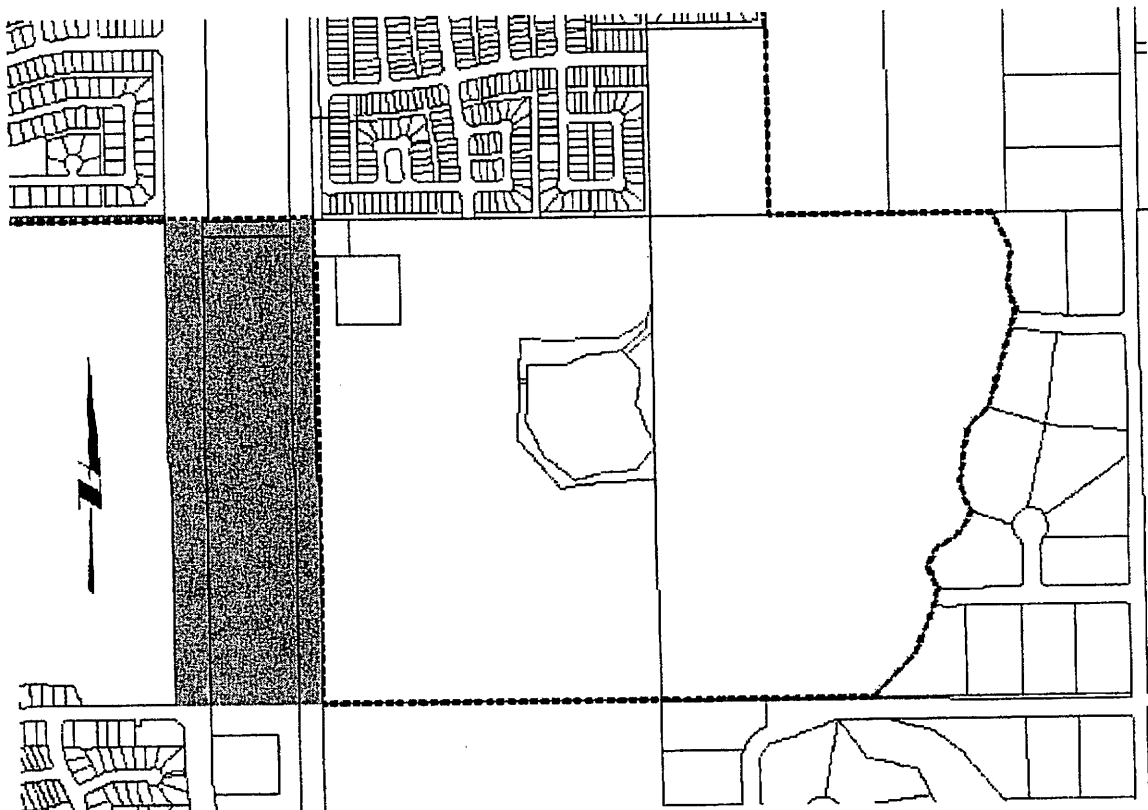
CONTAINING 0.459 HECTARES (1.14 ACRES) MORE OR LESS.

THAT PORTION OF THE GOVERNMENT ROAD ALLOWANCE ADJOINING THE WESTERN BOUNDARY OF SAID QUARTER SECTION.

**APPENDIX B**

**A SKETCH SHOWING THE GENERAL LOCATION OF THE AREA  
ANNEXED TO THE CITY OF GRANDE PRAIRIE**

**AFFECTED AREA**



August 23, 2006

The Lieutenant Governor in Council orders that

(a) effective July 1, 2006, the land described in Appendix A and shown on the sketch in Appendix B is separated from The County of Grande Prairie No. 1 and annexed to the City of Grande Prairie,

(b) any taxes owing to The County of Grande Prairie No. 1 at the end of June 30, 2006 in respect of the annexed land are transferred to and become payable to the City of Grande Prairie together with any lawful penalties and costs levied in respect of those taxes, and the City of Grande Prairie upon collecting those taxes, penalties and costs must pay them to The County of Grande Prairie No. 1, and

(c) the assessor for the City of Grande Prairie must assess, for the purposes of taxation in 2007, the annexed land and the assessable improvements to it.

For Information only

Recommended by: Minister of Municipal Affairs

Authority: Municipal Government Act  
(sections 126 and 138)

## **APPENDIX A**

### **DETAILED DESCRIPTION OF THE LANDS SEPARATED**

### **FROM THE COUNTY OF GRANDE PRAIRIE NO. 1 AND**

### **ANNEXED TO THE CITY OF GRANDE PRAIRIE**

**ALL THAT PORTION OF THE SOUTHWEST QUARTER OF SECTION SEVEN (7),  
TOWNSHIP SEVENTY-ONE (71), RANGE FIVE (5) WEST OF THE SIXTH  
MERIDIAN DESCRIBED AS:**

**RIGHT OF WAY AS SHOWN ON RAILWAY PLAN 5814NY**

**CONTAINING 11.76 HECTARES (29.05 ACRES) MORE OR LESS;**

**ROAD PLAN 4863TR**

**CONTAINING 3.26 HECTARES (8.06 ACRES) MORE OR LESS;**

RAILWAY PLAN 952 0679

CONTAINING 3.238 HECTARES (8.00 ACRES) MORE OR LESS; AND

ROAD PLAN 952 3830

CONTAINING 0.459 HECTARES (1.14 ACRES) MORE OR LESS.

THAT PORTION OF THE GOVERNMENT ROAD ALLOWANCE ADJOINING THE WESTERN BOUNDARY OF SAID QUARTER SECTION.

### APPENDIX B

**A SKETCH SHOWING THE GENERAL LOCATION OF THE AREA  
ANNEXED TO THE CITY OF GRANDE PRAIRIE**

#### AFFECTED AREA

