

MUNICIPAL SUSTAINABILITY INITIATIVE – OPERATING
2017 Report on Government-Wide Objectives for
Municipal Grant Funding
As of October 16, 2018

CONTENTS

Introduction	1
Government-Wide Objectives	2
Spending Estimates	
City	5
Specialized Municipality	7
Municipal District	8
Town	14
Village	25
Summer Village	37
Improvement District	42
Special Area	43
Métis Settlement	44
Hamlet	45
Other	46

Introduction

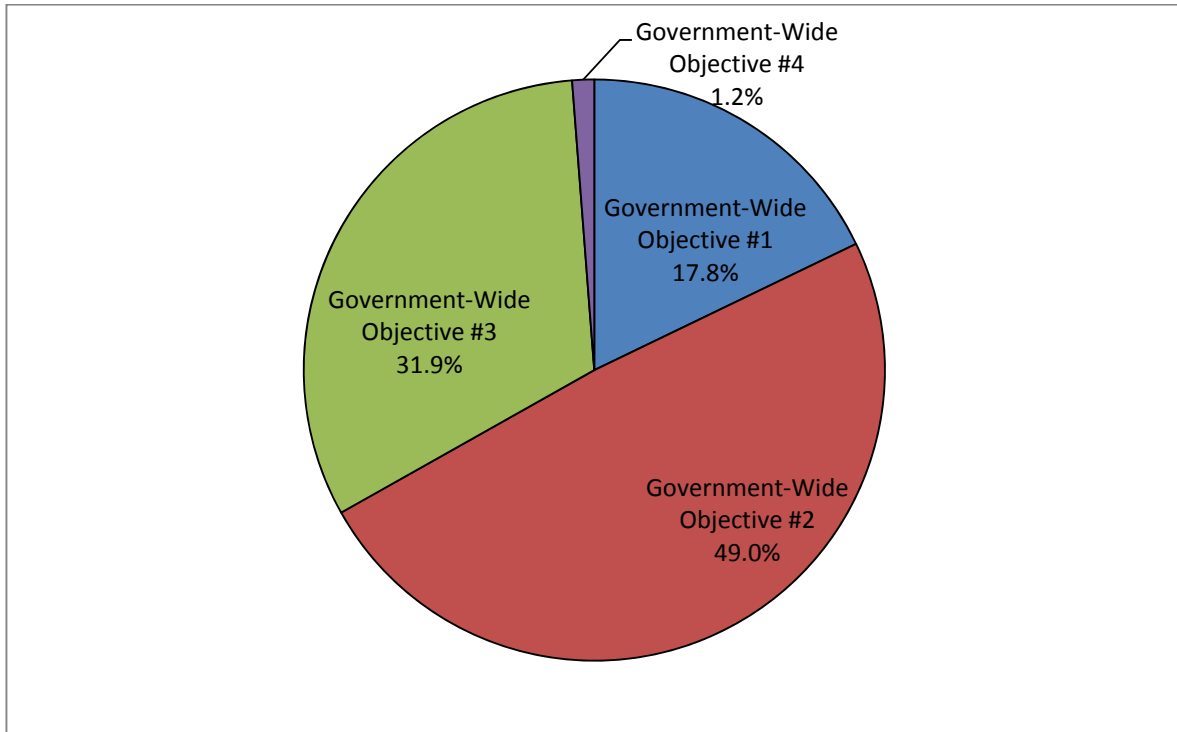
The Municipal Sustainability Initiative (MSI) operating program supports qualifying operating expenses of municipalities relating to planning activities, capacity building, municipal services, and support to non-profit organizations. Eligible projects include: the development of community sustainability plans and municipal statutory or land use plans; infrastructure planning and management systems; support for shared service arrangements with other municipalities; operational support for municipal services such as emergency preparedness or recreation services; the acquisition or construction of small capital assets; upgrading municipal buildings; and purchasing attachments for heavy-duty road maintenance equipment.

A municipality submits an annual operating spending plan to Municipal Affairs outlining its plans for the expenditure of its current MSI operating allocation and any carry-forward funding from the previous year, within the functional categories on the operating spending plan form.

Government-Wide Objectives for Municipal Grant Funding

Municipalities are required to direct MSI operating funding toward four government-wide objectives for municipal grant funding and their related functional categories. Provided in this report are summaries of how Alberta's municipalities planned to spend their MSI operating funding using the four government-wide objectives. Information contained in individual operating spending plans is also provided by municipality and organized by status type.

MSI operating funding (2017): A summary of how municipalities planned to spend their grant dollars by government-wide objective



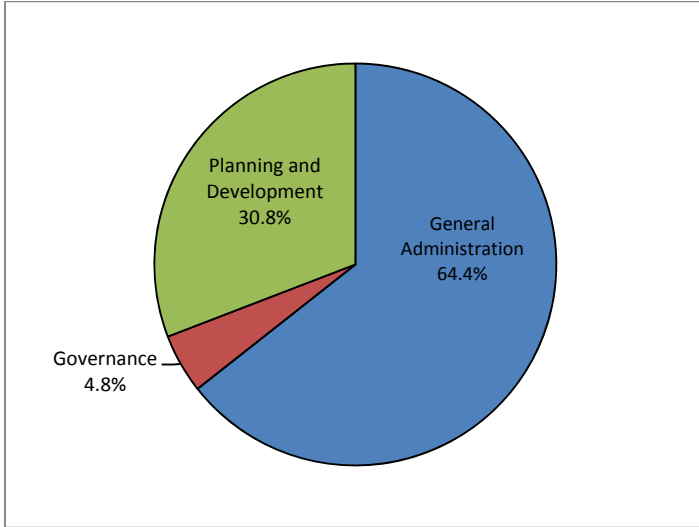
Government-Wide Objective #1 - To support initiatives that promote the viability and long-term sustainability of municipalities.

Government- Wide Objective #2 - To support the maintenance of safe, healthy and vibrant communities.

Government-Wide Objective #3 - To support the development and maintenance of core municipal infrastructure to meet existing and changing municipal needs.

Government-Wide Objective #4 - To support capacity building within municipalities.

Government-Wide Objective #1 - To support initiatives that promote the viability and long-term sustainability of municipalities.

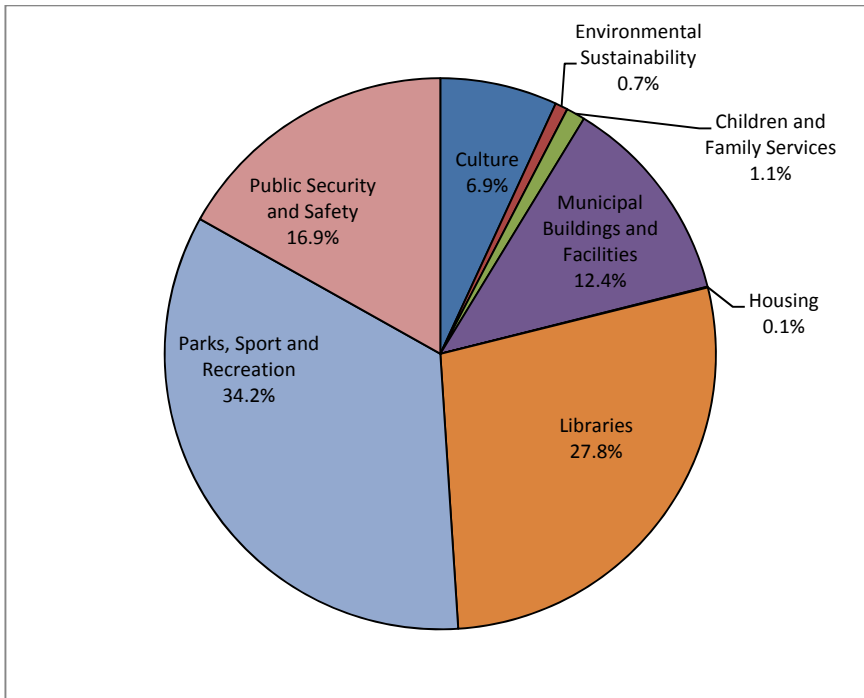


General Administration: Activities that provide for the overall operation of the municipality and are common to, or affect all of the services provided by the municipality.

Governance: Activities that support the ongoing management of the municipality through its elected officials.

Planning and Development: Activities that contribute to land-use planning, integrated community sustainability planning, or to the economic diversification of the municipality.

Government- Wide Objective #2 - To support the maintenance of safe, healthy and vibrant communities.



Culture: Activities that support and promote the development of arts and culture within the municipality.

Children and Family Services: Activities that support social programming for people in need, children, families, and seniors.

Environmental Sustainability: Activities that support the protection of the environment.

Housing: Activities that support affordable housing and supportive living options for seniors, low-income families and those with special needs.

Libraries: Activities that support library programming and associated facilities.

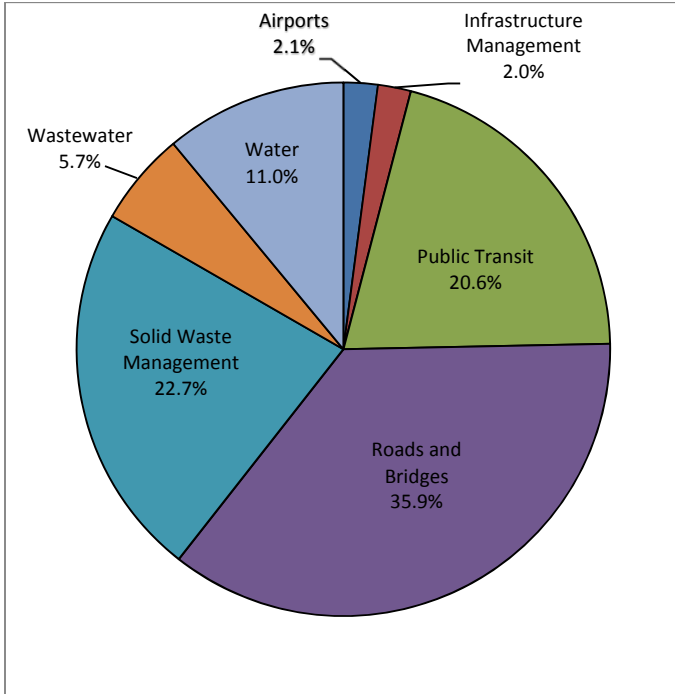
Municipal Buildings and Facilities: Buildings and facilities that are necessary to the overall operation of the municipality and that are common to the services provided by the municipality.

Parks, Sport and Recreation: Activities related to the development and operation of facilities and related programming for recreational opportunities such as sports and parks.

Public Security and Safety: Activities related to the reduction of crime and the promotion of safe and secure communities.

Percentages may not add to 100% due to rounding.

Government-Wide Objective #3 - To support the development and maintenance of core municipal infrastructure to meet existing and changing municipal needs.



Airports: Activities related to air transportation services.

Infrastructure Management: Activities that support systematic infrastructure planning and management.

Public Transit: Activities related to the provision of public transit services.

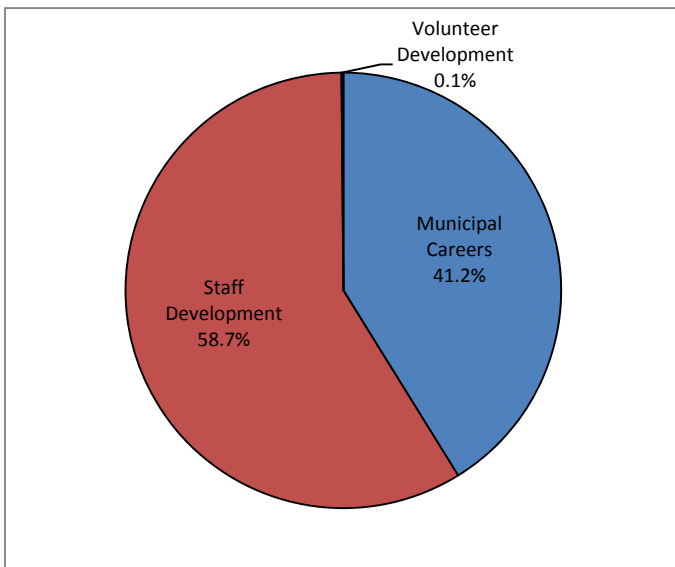
Roads and Bridges: Activities related to the construction and maintenance of roadways, bridges, and related structures.

Solid Waste Management: Activities related to the collection and management of garbage and other waste material.

Wastewater: Activities related to the collection or removal, treatment, and disposal of sanitary sewage.

Water: Activities related to acquiring, treating, and supplying water.

Government-Wide Objective #4 - To support capacity-building within municipalities.



Municipal Careers: Activities that support the retention and attraction of skilled employees of local governments.

Staff Development: Activities that support the development of municipal staff.

Volunteer Development: Activities that promote the development of the non-profit and voluntary sector.

Percentages may not add to 100% due to rounding.

MUNICIPAL SUSTAINABILITY INITIATIVE – OPERATING 2017 REPORT: As of October 16, 2018

The following figures in this report reflect the name and status in effect for each municipality at the time the report was produced, and the estimated expenditures for each municipality include any revised operating spending plans as of that date.

<u>City</u>	<u>Estimated Expenditures</u>
AIRDRIE	
Parks, Sport and Recreation	\$430,083
BROOKS	
Public Security and Safety	\$97,512
CAMROSE	
Culture	\$15,000
Environmental Sustainability	\$5,000
General Administration	\$14,764
Municipal Buildings and Facilities	\$10,000
Parks, Sport and Recreation	\$20,000
Planning and Development	\$15,000
Public Transit	\$10,000
Roads and Bridges	\$10,000
Solid Waste Management	\$5,000
Staff Development	\$20,000
Wastewater	\$5,000
Water	\$5,000
CHESTERMERE	
General Administration	\$105,749
Municipal Buildings and Facilities	\$105,187
COLD LAKE	
Culture	\$129,875
FORT SASKATCHEWAN	
Governance	\$19,266
Parks, Sport and Recreation	\$366,059
LACOMBE	
General Administration	\$28,631
Municipal Buildings and Facilities	\$23,000
Parks, Sport and Recreation	\$14,200
Planning and Development	\$63,250
LEDUC	
Public Transit	\$240,863
LETHBRIDGE	
Roads and Bridges	\$615,432
LLOYDMINSTER	
Roads and Bridges	\$155,577

City**Estimated Expenditures**

MEDICINE HAT

Airports	\$119,531
Roads and Bridges	\$748,178

RED DEER

Libraries	\$701,007
-----------	-----------

SPRUCE GROVE

Public Transit	\$241,388
----------------	-----------

ST. ALBERT

Libraries	\$472,666
-----------	-----------

WETASKIWIN

Libraries	\$31,227
Municipal Buildings and Facilities	\$8,755
Public Transit	\$27,781
Solid Waste Management	\$20,000

Specialized Municipality

Estimated Expenditures

CROWSNEST PASS, Municipality of

General Administration \$113,085

Planning and Development \$15,000

JASPER, Municipality of

General Administration \$71,000

Housing \$8,168

Municipal Buildings and Facilities \$27,500

Planning and Development \$10,500

LAC LA BICHE COUNTY

Culture \$127,118

MACKENZIE COUNTY

Roads and Bridges \$122,753

STRATHCONA COUNTY

Public Transit \$812,748

Municipal District**Estimated Expenditures**

ACADIA NO. 34, M.D. OF	
Parks, Sport and Recreation	\$40,991
ATHABASCA COUNTY	
Roads and Bridges	\$174,519
BARRHEAD NO. 11, COUNTY OF	
Libraries	\$132,307
Public Security and Safety	\$43,415
BEAVER COUNTY	
Culture	\$5,000
Governance	\$7,500
Libraries	\$50,000
Parks, Sport and Recreation	\$100,000
Public Security and Safety	\$45,715
BIG LAKES COUNTY	
Parks, Sport and Recreation	\$79,002
BIGHORN NO. 8, M.D. OF	
Municipal Buildings and Facilities	\$58,571
Public Security and Safety	\$10,000
BIRCH HILLS COUNTY	
Roads and Bridges	\$87,706
BONNYVILLE NO. 87, M.D. OF	
Culture	\$35,000
Parks, Sport and Recreation	\$142,868
BRAZEAU COUNTY	
Parks, Sport and Recreation	\$122,852
CAMROSE COUNTY	
Environmental Sustainability	\$26,750
General Administration	\$74,507
Libraries	\$31,500
Municipal Buildings and Facilities	\$159,520
Public Security and Safety	\$80,000
CARDSTON COUNTY	
General Administration	\$23,414
Libraries	\$109,587
CLEAR HILLS COUNTY	
Parks, Sport and Recreation	\$139,482

Municipal District**Estimated Expenditures**

CLEARWATER COUNTY

Parks, Sport and Recreation \$199,535

CYPRESS COUNTY

Culture \$34,620

Planning and Development \$55,000

Staff Development \$45,000

Water \$27,685

FAIRVIEW NO. 136, M.D. OF

Planning and Development \$74,805

FLAGSTAFF COUNTY

Municipal Buildings and Facilities \$8,000

Parks, Sport and Recreation \$3,780

Roads and Bridges \$183,585

Wastewater \$21,806

Water \$15,200

FOOTHILLS NO. 31, M.D. OF

General Administration \$248,035

FORTY MILE NO. 8, COUNTY OF

Children and Family Services \$27,116

General Administration \$29,300

Libraries \$33,027

Municipal Buildings and Facilities \$82,231

Planning and Development \$51,500

GRANDE PRAIRIE NO. 1, COUNTY OF

Public Security and Safety \$270,414

GREENVIEW NO. 16, M.D. OF

Municipal Buildings and Facilities \$207,345

KNEEHILL COUNTY

Parks, Sport and Recreation \$253,030

LAC STE. ANNE COUNTY

Municipal Buildings and Facilities \$105,353

LACOMBE COUNTY

Solid Waste Management \$147,584

LAMONT COUNTY

Parks, Sport and Recreation \$165,666

Municipal District**Estimated Expenditures**

LEDUC COUNTY

Solid Waste Management	\$246,464
------------------------	-----------

LESSER SLAVE RIVER NO. 124, M.D. OF

Public Security and Safety	\$60,329
----------------------------	----------

LETHBRIDGE COUNTY

General Administration	\$148,814
------------------------	-----------

Planning and Development	\$10,000
--------------------------	----------

Wastewater	\$50,000
------------	----------

MINBURN NO. 27, COUNTY OF

Culture	\$64,600
---------	----------

Parks, Sport and Recreation	\$8,000
-----------------------------	---------

Solid Waste Management	\$72,463
------------------------	----------

Wastewater	\$5,000
------------	---------

Water	\$27,567
-------	----------

MOUNTAIN VIEW COUNTY

Public Security and Safety	\$167,135
----------------------------	-----------

NEWELL, COUNTY OF

Public Security and Safety	\$77,676
----------------------------	----------

Solid Waste Management	\$105,000
------------------------	-----------

NORTHERN LIGHTS, COUNTY OF

General Administration	\$112,281
------------------------	-----------

NORTHERN SUNRISE COUNTY

Parks, Sport and Recreation	\$54,700
-----------------------------	----------

Public Security and Safety	\$22,443
----------------------------	----------

OPPORTUNITY NO. 17, M.D. OF

Roads and Bridges	\$97,454
-------------------	----------

PAINTEARTH NO. 18, COUNTY OF

Parks, Sport and Recreation	\$133,879
-----------------------------	-----------

PARKLAND COUNTY

General Administration	\$591,620
------------------------	-----------

Wastewater	\$3,650
------------	---------

Water	\$3,650
-------	---------

PEACE NO. 135, M.D. OF

Planning and Development	\$60,263
--------------------------	----------

PINCHER CREEK NO. 9, M.D. OF

Roads and Bridges	\$55,508
-------------------	----------

Municipal District**Estimated Expenditures**

PONOKA COUNTY

Solid Waste Management \$115,187

PROVOST NO. 52, M.D. OF

Solid Waste Management \$98,555

RANCHLAND NO. 66, M.D. OF

Municipal Buildings and Facilities \$5,000

Planning and Development \$5,000

Public Security and Safety \$5,000

Roads and Bridges \$7,675

RED DEER COUNTY

Public Transit \$228,688

ROCKY VIEW COUNTY

Libraries \$374,600

Planning and Development \$108,933

SADDLE HILLS COUNTY

Public Security and Safety \$79,139

SMOKY LAKE COUNTY

Municipal Buildings and Facilities \$17,156

Parks, Sport and Recreation \$95,000

SMOKY RIVER NO. 130, M.D. OF

Libraries \$12,140

Parks, Sport and Recreation \$25,670

Planning and Development \$74,844

SPIRIT RIVER NO. 133, M.D. OF

General Administration \$10,066

Libraries \$1,500

Parks, Sport and Recreation \$26,000

Public Security and Safety \$11,125

ST. PAUL NO. 19, COUNTY OF

Culture \$72,582

Libraries \$40,657

STARLAND COUNTY

Parks, Sport and Recreation \$115,884

STETTLER NO. 6, COUNTY OF

Libraries \$74,863

Parks, Sport and Recreation \$135,750

Municipal District**Estimated Expenditures**

STURGEON COUNTY

General Administration	\$138,715
Governance	\$40,000
Infrastructure Management	\$91,775
Planning and Development	\$40,000
Public Transit	\$18,900
Roads and Bridges	\$143,000
Staff Development	\$40,000

TABER, M.D. OF

Parks, Sport and Recreation	\$172,604
-----------------------------	-----------

THORHILD COUNTY

Libraries	\$104,824
Parks, Sport and Recreation	\$20,850

TWO HILLS NO. 21, COUNTY OF

Libraries	\$5,852
Municipal Buildings and Facilities	\$47,953
Parks, Sport and Recreation	\$100,000

VERMILION RIVER, COUNTY OF

General Administration	\$169,511
Libraries	\$9,500
Planning and Development	\$45,000

VULCAN COUNTY

Libraries	\$109,000
Public Security and Safety	\$45,000
Staff Development	\$31,940

WAINWRIGHT NO. 61, M.D. OF

Parks, Sport and Recreation	\$109,705
Public Security and Safety	\$109,706

WARNER NO. 5, COUNTY OF

Public Security and Safety	\$154,496
----------------------------	-----------

WESTLOCK COUNTY

Roads and Bridges	\$223,079
-------------------	-----------

WETASKIWIN NO. 10, COUNTY OF

Governance	\$25,000
Municipal Careers	\$105,000
Parks, Sport and Recreation	\$63,869

Municipal District

Estimated Expenditures

WHEATLAND COUNTY

General Administration \$107,654

Planning and Development \$30,000

WILLOW CREEK NO. 26, M.D. OF

Parks, Sport and Recreation \$100,830

Solid Waste Management \$84,000

WOODLANDS COUNTY

Parks, Sport and Recreation \$78,698

YELLOWHEAD COUNTY

Libraries \$232,949

Town**Estimated Expenditures****ATHABASCA**

Libraries \$33,802

BANFF

Public Transit \$96,780

BARRHEAD

Parks, Sport and Recreation \$62,025

Roads and Bridges \$62,030

BASHAW

General Administration \$19,450

Libraries \$8,500

Parks, Sport and Recreation \$27,915

BASSANO

General Administration \$25,500

Governance \$2,000

Infrastructure Management \$10,139

Parks, Sport and Recreation \$2,009

Planning and Development \$19,219

Public Security and Safety \$18,500

Roads and Bridges \$8,000

Solid Waste Management \$2,510

Wastewater \$8,000

BEAUMONT

Public Security and Safety \$127,379

BEAVERLODGE

Roads and Bridges \$29,591

BENTLEY

Libraries \$18,717

Parks, Sport and Recreation \$40,000

Planning and Development \$4,291

BLACK DIAMOND

Municipal Careers \$15,000

Planning and Development \$15,452

BLACKFALDS

Libraries \$72,647

Town**Estimated Expenditures****BON ACCORD**

Culture	\$26,807
Public Security and Safety	\$51,982

BONNYVILLE

Parks, Sport and Recreation	\$67,396
-----------------------------	----------

BOW ISLAND

General Administration	\$11,500
Libraries	\$19,110
Parks, Sport and Recreation	\$64,095
Roads and Bridges	\$20,500
Solid Waste Management	\$61,825

BOWDEN

General Administration	\$2,000
Libraries	\$5,000
Planning and Development	\$7,000
Roads and Bridges	\$20,000
Staff Development	\$2,000
Wastewater	\$30,000
Water	\$2,009

BRUDERHEIM

Parks, Sport and Recreation	\$29,974
Planning and Development	\$18,000

CALMAR

Water	\$27,800
-------	----------

CANMORE

Libraries	\$168,033
-----------	-----------

CARDSTON

Libraries	\$46,000
Planning and Development	\$34,000
Solid Waste Management	\$65,000
Wastewater	\$23,525

CARSTAIRS

Parks, Sport and Recreation	\$37,673
-----------------------------	----------

CASTOR

General Administration	\$29,689
Public Security and Safety	\$25,000

Town**Estimated Expenditures****CLARESHOLM**

Libraries	\$107,261
-----------	-----------

COALDALE

Planning and Development	\$109,125
--------------------------	-----------

Public Transit	\$38,850
----------------	----------

Roads and Bridges	\$51,178
-------------------	----------

COALHURST

General Administration	\$25,000
------------------------	----------

Parks, Sport and Recreation	\$3,665
-----------------------------	---------

Planning and Development	\$10,000
--------------------------	----------

Public Security and Safety	\$15,000
----------------------------	----------

Roads and Bridges	\$30,000
-------------------	----------

Solid Waste Management	\$25,000
------------------------	----------

Water	\$14,000
-------	----------

COCHRANE

Planning and Development	\$50,000
--------------------------	----------

Public Transit	\$144,888
----------------	-----------

CORONATION

Libraries	\$21,876
-----------	----------

Parks, Sport and Recreation	\$22,424
-----------------------------	----------

Public Security and Safety	\$11,231
----------------------------	----------

CROSSFIELD

Solid Waste Management	\$36,394
------------------------	----------

DAYSLAND

Children and Family Services	\$8,071
------------------------------	---------

Culture	\$20,000
---------	----------

Solid Waste Management	\$21,407
------------------------	----------

DEVON

Libraries	\$56,225
-----------	----------

DIDSBURY

General Administration	\$61,927
------------------------	----------

Libraries	\$75,000
-----------	----------

Town**Estimated Expenditures****DRAYTON VALLEY**

Culture	\$10,000
Environmental Sustainability	\$10,000
Infrastructure Management	\$10,000
Municipal Buildings and Facilities	\$10,000
Parks, Sport and Recreation	\$10,000
Roads and Bridges	\$10,350
Wastewater	\$10,000

DRUMHELLER

General Administration	\$75,000
Libraries	\$140,236

ECKVILLE

Culture	\$20,000
Governance	\$34,500
Planning and Development	\$10,000
Water	\$740

EDSON

Culture	\$72,456
---------	----------

ELK POINT

Children and Family Services	\$5,000
Culture	\$13,500
Parks, Sport and Recreation	\$12,958
Water	\$25,000

FAIRVIEW

Culture	\$20,000
Libraries	\$131,334

FALHER

Parks, Sport and Recreation	\$29,000
Planning and Development	\$26,999
Wastewater	\$45,000

FORT MACLEOD

General Administration	\$45,000
Municipal Buildings and Facilities	\$46,579

FOX CREEK

Culture	\$30,898
---------	----------

Town**Estimated Expenditures****GIBBONS**

Parks, Sport and Recreation \$33,240

GRANDE CACHE

Planning and Development \$122,063

GRANUM

General Administration \$7,993

Public Security and Safety \$12,760

Solid Waste Management \$8,240

Staff Development \$1,500

Water \$20,000

GRIMSHAW

Parks, Sport and Recreation \$76,755

HANNA

Libraries \$93,660

Parks, Sport and Recreation \$5,727

Planning and Development \$30,450

HARDISTY

Parks, Sport and Recreation \$19,048

HIGH LEVEL

Libraries \$40,000

Parks, Sport and Recreation \$70,104

HIGH PRAIRIE

General Administration \$40,000

Parks, Sport and Recreation \$23,485

Public Security and Safety \$15,000

HIGH RIVER

General Administration \$100,644

HINTON

Public Security and Safety \$82,215

INNISFAIL

Culture \$24,180

Public Transit \$42,000

Town**Estimated Expenditures**

IRRICANA

Governance	\$11,000
Municipal Buildings and Facilities	\$20,000
Planning and Development	\$19,369
Staff Development	\$18,000

KILLAM

Children and Family Services	\$8,500
General Administration	\$9,500
Libraries	\$13,000
Water	\$26,121

LAMONT

Parks, Sport and Recreation	\$57,738
-----------------------------	----------

LEGAL

Environmental Sustainability	\$10,500
General Administration	\$20,421
Municipal Buildings and Facilities	\$22,200
Parks, Sport and Recreation	\$4,500
Public Security and Safety	\$4,200

MAGRATH

Culture	\$12,000
General Administration	\$25,000
Libraries	\$50,000
Parks, Sport and Recreation	\$30,194

MANNING

Wastewater	\$20,000
Water	\$23,578

MAYERTHORPE

Solid Waste Management	\$38,000
Wastewater	\$38,000
Water	\$50,651

MCLENNAN

Airports	\$14,000
Children and Family Services	\$6,700
Libraries	\$4,900
Parks, Sport and Recreation	\$12,282
Planning and Development	\$13,900
Public Security and Safety	\$27,500

Town**Estimated Expenditures****MILK RIVER**

General Administration	\$5,000
Municipal Careers	\$6,000
Parks, Sport and Recreation	\$15,589
Public Security and Safety	\$23,560
Water	\$36,000

MILLET

Culture	\$34,725
Libraries	\$31,250

MORINVILLE

Culture	\$28,942
Libraries	\$46,000

MUNDARE

Libraries	\$4,175
Municipal Buildings and Facilities	\$28,039
Parks, Sport and Recreation	\$3,733

NANTON

General Administration	\$8,770
Parks, Sport and Recreation	\$20,000
Planning and Development	\$20,000

NOBLEFORD

Planning and Development	\$15,000
Solid Waste Management	\$24,568

OKOTOKS

General Administration	\$110,500
Planning and Development	\$215,544

OLDS

Parks, Sport and Recreation	\$72,981
-----------------------------	----------

ONOWAY

Public Security and Safety	\$40,326
----------------------------	----------

OYEN

Children and Family Services	\$10,000
Culture	\$5,000
Parks, Sport and Recreation	\$12,112
Planning and Development	\$29,500
Public Security and Safety	\$42,000

Town**Estimated Expenditures**

PEACE RIVER	
Solid Waste Management	\$61,378
PENHOLD	
Libraries	\$31,631
PICTURE BUTTE	
Parks, Sport and Recreation	\$85,701
PINCHER CREEK	
Children and Family Services	\$20,000
Public Transit	\$84,567
PONOKA	
Parks, Sport and Recreation	\$183,195
PROVOST	
Roads and Bridges	\$50,000
Wastewater	\$5,000
Water	\$10,521
RAYMOND	
Culture	\$14,875
General Administration	\$150,000
Libraries	\$60,000
Parks, Sport and Recreation	\$15,592
Planning and Development	\$40,000
Public Security and Safety	\$70,000
REDCLIFF	
Public Transit	\$50,557
REDWATER	
General Administration	\$12,266
Public Security and Safety	\$17,540
RIMBEY	
Solid Waste Management	\$30,114
ROCKY MOUNTAIN HOUSE	
General Administration	\$60,689
SEDGEWICK	
Infrastructure Management	\$12,830
Planning and Development	\$17,000
Public Security and Safety	\$5,905

Town**Estimated Expenditures****SEXSMITH**

Libraries	\$30,044
-----------	----------

SMOKY LAKE

Children and Family Services	\$10,000
------------------------------	----------

Culture	\$3,000
---------	---------

General Administration	\$4,000
------------------------	---------

Governance	\$5,000
------------	---------

Libraries	\$27,500
-----------	----------

Parks, Sport and Recreation	\$3,000
-----------------------------	---------

Planning and Development	\$2,000
--------------------------	---------

Solid Waste Management	\$2,143
------------------------	---------

Staff Development	\$2,000
-------------------	---------

Volunteer Development	\$500
-----------------------	-------

SPIRIT RIVER

General Administration	\$17,800
------------------------	----------

Public Security and Safety	\$10,000
----------------------------	----------

Solid Waste Management	\$30,953
------------------------	----------

ST. PAUL

Infrastructure Management	\$36,000
---------------------------	----------

Municipal Buildings and Facilities	\$242,620
------------------------------------	-----------

Parks, Sport and Recreation	\$38,500
-----------------------------	----------

STAVELY

General Administration	\$3,411
------------------------	---------

Infrastructure Management	\$3,000
---------------------------	---------

Parks, Sport and Recreation	\$7,500
-----------------------------	---------

Roads and Bridges	\$7,500
-------------------	---------

Solid Waste Management	\$3,520
------------------------	---------

Staff Development	\$2,500
-------------------	---------

STETTLER

Public Security and Safety	\$52,513
----------------------------	----------

STONY PLAIN

Roads and Bridges	\$123,432
-------------------	-----------

STRATHMORE

Municipal Buildings and Facilities	\$101,130
------------------------------------	-----------

Town**Estimated Expenditures****SUNDRE**

General Administration	\$8,000
Municipal Buildings and Facilities	\$30,553
Public Security and Safety	\$21,000
Staff Development	\$3,200

SWAN HILLS

Water	\$78,262
-------	----------

SYLVAN LAKE

Libraries	\$112,235
-----------	-----------

TABER

Wastewater	\$128,244
Water	\$92,867

THORSBY

Culture	\$20,000
General Administration	\$15,000
Municipal Buildings and Facilities	\$14,003
Staff Development	\$5,000
Water	\$5,000

THREE HILLS

Culture	\$25,000
General Administration	\$15,000
Libraries	\$27,000
Parks, Sport and Recreation	\$86,809

TOFIELD

Children and Family Services	\$20,100
Culture	\$23,000
General Administration	\$6,500
Governance	\$6,000
Libraries	\$8,000
Parks, Sport and Recreation	\$5,062

TROCHU

General Administration	\$37,635
Libraries	\$20,000
Municipal Careers	\$24,057
Parks, Sport and Recreation	\$4,000

TURNER VALLEY

General Administration	\$30,807
------------------------	----------

Town**Estimated Expenditures**

TWO HILLS

Municipal Buildings and Facilities	\$123,987
Public Security and Safety	\$5,000

VALLEYVIEW

Libraries	\$34,165
Public Security and Safety	\$29,373

VAUXHALL

General Administration	\$60,000
Planning and Development	\$10,000
Public Security and Safety	\$15,000
Solid Waste Management	\$32,579

VEGREVILLE

Governance	\$51,366
Municipal Buildings and Facilities	\$53,194

VERMILION

Parks, Sport and Recreation	\$43,233
-----------------------------	----------

VIKING

Municipal Buildings and Facilities	\$59,580
------------------------------------	----------

VULCAN

Solid Waste Management	\$60,158
------------------------	----------

WAINWRIGHT

Roads and Bridges	\$54,762
-------------------	----------

WEMBLEY

Solid Waste Management	\$23,438
------------------------	----------

WESTLOCK

Culture	\$24,000
General Administration	\$12,000
Infrastructure Management	\$15,300
Parks, Sport and Recreation	\$14,500
Public Security and Safety	\$39,000
Wastewater	\$87,115

WHITECOURT

Airports	\$57,420
Culture	\$22,000
General Administration	\$22,492
Planning and Development	\$7,520

Village**Estimated Expenditures****ACME**

Children and Family Services	\$5,923
Libraries	\$3,879
Planning and Development	\$7,000
Public Security and Safety	\$10,000
Roads and Bridges	\$16,000

ALBERTA BEACH

Public Security and Safety	\$21,387
----------------------------	----------

ALIX

Parks, Sport and Recreation	\$19,566
-----------------------------	----------

ALLIANCE

Children and Family Services	\$1,514
Libraries	\$1,766
Parks, Sport and Recreation	\$12,000
Public Security and Safety	\$715
Water	\$12,662

AMISK

Libraries	\$5,264
Parks, Sport and Recreation	\$4,140
Solid Waste Management	\$12,918
Wastewater	\$1,968
Water	\$7,000

ANDREW

Municipal Buildings and Facilities	\$22,006
Public Security and Safety	\$6,000
Water	\$3,100

ARROWWOOD

General Administration	\$29,848
------------------------	----------

BARNWELL

General Administration	\$5,000
Libraries	\$7,000
Planning and Development	\$6,000
Public Security and Safety	\$15,000
Roads and Bridges	\$7,000
Solid Waste Management	\$10,000
Wastewater	\$5,000
Water	\$36,586

Village**Estimated Expenditures****BARONS**

Children and Family Services	\$2,280
General Administration	\$4,000
Libraries	\$3,100
Planning and Development	\$3,650
Public Security and Safety	\$7,500
Roads and Bridges	\$4,850
Solid Waste Management	\$14,743

BAWLF

Governance	\$2,000
Infrastructure Management	\$5,000
Libraries	\$3,000
Municipal Buildings and Facilities	\$4,000
Parks, Sport and Recreation	\$5,000
Planning and Development	\$2,000
Public Security and Safety	\$10,000
Roads and Bridges	\$2,028
Solid Waste Management	\$10,000
Staff Development	\$4,000

BEISEKER

Water	\$19,724
-------	----------

BERWYN

Solid Waste Management	\$46,811
Water	\$10,000

BIG VALLEY

Public Security and Safety	\$25,000
Roads and Bridges	\$17,602

BITTERN LAKE

Children and Family Services	\$1,536
General Administration	\$7,917
Governance	\$80
Libraries	\$1,801
Municipal Buildings and Facilities	\$1,300
Parks, Sport and Recreation	\$330
Planning and Development	\$1,000
Public Security and Safety	\$12,884
Staff Development	\$2,000

Village**Estimated Expenditures****BOYLE**

Parks, Sport and Recreation \$38,180

BRETON

General Administration \$19,856

Water \$19,856

CARBON

Children and Family Services \$5,300

Libraries \$7,000

Planning and Development \$5,500

Roads and Bridges \$44,270

CARMANGAY

Children and Family Services \$2,900

General Administration \$3,500

Governance \$600

Libraries \$1,800

Solid Waste Management \$18,000

Wastewater \$7,958

Water \$1,000

CAROLINE

Children and Family Services \$1,000

Culture \$1,000

Environmental Sustainability \$2,000

General Administration \$10,000

Governance \$5,000

Infrastructure Management \$4,000

Libraries \$5,000

Municipal Buildings and Facilities \$10,000

Parks, Sport and Recreation \$1,400

Planning and Development \$5,000

Public Security and Safety \$7,600

Wastewater \$2,850

CEREAL

Governance \$1,500

Libraries \$320

Municipal Buildings and Facilities \$7,672

Solid Waste Management \$11,426

Staff Development \$4,500

Village**Estimated Expenditures****CHAMPION**

Children and Family Services	\$2,700
Culture	\$3,000
General Administration	\$10,000
Governance	\$2,000
Libraries	\$2,700
Municipal Buildings and Facilities	\$2,000
Municipal Careers	\$5,000
Planning and Development	\$2,000
Staff Development	\$2,000
Water	\$13,550

CHAUVIN

Municipal Buildings and Facilities	\$42,412
------------------------------------	----------

CHIPMAN

Governance	\$10,276
Roads and Bridges	\$27,237

CLIVE

Public Security and Safety	\$5,000
Roads and Bridges	\$21,293
Solid Waste Management	\$5,000

CLYDE

Children and Family Services	\$4,900
General Administration	\$10,859
Governance	\$1,000
Libraries	\$2,700
Municipal Buildings and Facilities	\$5,000
Parks, Sport and Recreation	\$11,760
Solid Waste Management	\$4,679
Staff Development	\$4,000
Water	\$10,000

CONSORT

Libraries	\$7,000
Parks, Sport and Recreation	\$36,241
Planning and Development	\$21,500
Solid Waste Management	\$8,000

COUTTS

Libraries	\$26,730
-----------	----------

<u>Village</u>	<u>Estimated Expenditures</u>
COWLEY	
Water	\$33,683
CREMONA	
Culture	\$1,000
General Administration	\$5,000
Governance	\$5,000
Municipal Buildings and Facilities	\$3,441
Planning and Development	\$20,000
CZAR	
General Administration	\$3,000
Libraries	\$4,200
Parks, Sport and Recreation	\$6,000
Public Security and Safety	\$4,175
Solid Waste Management	\$10,764
DELBURNE	
General Administration	\$7,500
Governance	\$13,250
Municipal Buildings and Facilities	\$15,000
Parks, Sport and Recreation	\$22,803
Planning and Development	\$6,500
Roads and Bridges	\$5,000
Staff Development	\$3,500
DELIA	
Water	\$22,796
DEWBERRY	
Children and Family Services	\$1,200
Roads and Bridges	\$3,000
Wastewater	\$3,341
Water	\$25,083
DONALDA	
Culture	\$1,500
Libraries	\$6,300
Municipal Buildings and Facilities	\$2,000
Municipal Careers	\$595
Roads and Bridges	\$25,000

Village**Estimated Expenditures****DONNELLY**

Airports	\$7,164
Children and Family Services	\$4,401
Libraries	\$2,690
Planning and Development	\$5,676
Public Security and Safety	\$13,209
Roads and Bridges	\$3,000
Wastewater	\$3,000

DUCHESS

General Administration	\$42,931
Parks, Sport and Recreation	\$13,550
Public Security and Safety	\$33,000
Wastewater	\$5,000

EDBERG

General Administration	\$28,139
------------------------	----------

EDGERTON

Libraries	\$1,865
Solid Waste Management	\$24,000
Wastewater	\$9,000
Water	\$12,000

ELNORA

Environmental Sustainability	\$14,023
Municipal Buildings and Facilities	\$2,321
Parks, Sport and Recreation	\$11,939
Roads and Bridges	\$27,647

EMPRESS

Culture	\$4,499
General Administration	\$2,500
Libraries	\$2,600
Planning and Development	\$8,193
Roads and Bridges	\$9,605
Staff Development	\$2,500

FERINTOSH

General Administration	\$22,524
------------------------	----------

FOREMOST

Solid Waste Management	\$37,417
------------------------	----------

Village**Estimated Expenditures****FORESTBURG**

Roads and Bridges \$85,380

GADSBY

Municipal Buildings and Facilities \$3,194

Roads and Bridges \$6,900

GIROUXVILLE

Airports \$4,588

Children and Family Services \$2,650

Culture \$7,646

Libraries \$2,443

Planning and Development \$4,656

Public Security and Safety \$10,467

Wastewater \$3,500

GLENDON

Public Security and Safety \$16,800

Solid Waste Management \$19,003

GLENWOOD

Water \$27,144

HALKIRK

Culture \$5,000

General Administration \$3,000

Governance \$1,500

Planning and Development \$1,500

Public Security and Safety \$4,000

Roads and Bridges \$5,000

Water \$4,438

HEISLER

Roads and Bridges \$13,412

Solid Waste Management \$13,412

HINES CREEK

Parks, Sport and Recreation \$44,000

Water \$1,040

HOLDEN

Municipal Buildings and Facilities \$9,730

Public Security and Safety \$37,000

Village**Estimated Expenditures****HUGHENDEN**

Municipal Buildings and Facilities \$35,301

HUSSAR

General Administration \$4,970

Governance \$4,577

Municipal Buildings and Facilities \$6,750

Parks, Sport and Recreation \$3,500

Staff Development \$2,500

HYTHE

Libraries \$7,000

Parks, Sport and Recreation \$30,000

Public Security and Safety \$23,000

Solid Waste Management \$11,548

Water \$9,000

INNISFREE

General Administration \$5,169

Planning and Development \$22,000

Staff Development \$5,169

IRMA

Culture \$18,000

Public Security and Safety \$16,450

KITSCOTY

General Administration \$1,000

Governance \$1,000

Municipal Buildings and Facilities \$9,500

Parks, Sport and Recreation \$3,934

Public Security and Safety \$2,500

Roads and Bridges \$8,380

Staff Development \$5,111

Wastewater \$2,000

Water \$5,233

LINDEN

Water \$32,551

LOMOND

Children and Family Services \$3,289

General Administration \$2,905

Water \$23,027

Village**Estimated Expenditures**

LONGVIEW

General Administration	\$11,533
Planning and Development	\$5,297

LOUGHEED

Libraries	\$2,195
Roads and Bridges	\$25,000
Water	\$9,410

MANNVILLE

Culture	\$2,000
Libraries	\$2,500
Municipal Buildings and Facilities	\$5,005
Parks, Sport and Recreation	\$60,000
Roads and Bridges	\$9,500

MARWAYNE

Solid Waste Management	\$63,355
Water	\$4,766

MILO

General Administration	\$20,014
------------------------	----------

MORRIN

Water	\$34,352
-------	----------

MUNSON

Water	\$23,580
-------	----------

MYRNAM

Children and Family Services	\$3,200
Culture	\$1,500
General Administration	\$16,508
Libraries	\$4,500
Municipal Buildings and Facilities	\$6,000
Parks, Sport and Recreation	\$5,000
Planning and Development	\$3,500
Staff Development	\$4,000

NAMPA

Municipal Buildings and Facilities	\$16,770
Water	\$12,097

Village**Estimated Expenditures**

PARADISE VALLEY

Culture	\$8,000
General Administration	\$2,175
Governance	\$600
Parks, Sport and Recreation	\$13,000
Planning and Development	\$4,884

ROCKYFORD

Water	\$28,775
-------	----------

ROSALIND

Children and Family Services	\$1,662
General Administration	\$3,823
Governance	\$7,000
Libraries	\$1,528
Parks, Sport and Recreation	\$3,081
Planning and Development	\$1,028
Roads and Bridges	\$4,000
Solid Waste Management	\$210
Staff Development	\$2,265
Wastewater	\$1,775
Water	\$3,635

ROSEMARY

Environmental Sustainability	\$40,000
Parks, Sport and Recreation	\$25,000
Planning and Development	\$2,308
Public Security and Safety	\$15,000
Roads and Bridges	\$5,000
Solid Waste Management	\$5,000

RYCROFT

Water	\$65,186
-------	----------

RYLEY

Public Security and Safety	\$54,618
----------------------------	----------

SPRING LAKE

Solid Waste Management	\$19,163
------------------------	----------

STANDARD

General Administration	\$4,200
Libraries	\$1,500
Water	\$18,459

Village**Estimated Expenditures**

STIRLING

Children and Family Services	\$7,000
General Administration	\$10,000
Libraries	\$20,000
Parks, Sport and Recreation	\$39,866
Public Security and Safety	\$35,000

VETERAN

Culture	\$12,500
General Administration	\$1,000
Libraries	\$1,000
Parks, Sport and Recreation	\$15,000
Solid Waste Management	\$4,595
Staff Development	\$500

VILNA

General Administration	\$4,000
Libraries	\$600
Solid Waste Management	\$10,200
Wastewater	\$8,000
Water	\$15,082

WABAMUN

Roads and Bridges	\$18,910
-------------------	----------

WARBURG

Culture	\$5,000
Governance	\$3,000
Libraries	\$10,000
Municipal Buildings and Facilities	\$15,000
Parks, Sport and Recreation	\$12,000
Public Security and Safety	\$20,000
Roads and Bridges	\$12,910

Village**Estimated Expenditures**

WARNER

Airports	\$2,500
Children and Family Services	\$1,800
Culture	\$2,500
Environmental Sustainability	\$3,308
General Administration	\$5,500
Libraries	\$4,000
Municipal Buildings and Facilities	\$6,000
Parks, Sport and Recreation	\$3,500
Public Security and Safety	\$2,500
Roads and Bridges	\$2,500
Solid Waste Management	\$2,500
Staff Development	\$4,500
Wastewater	\$2,500
Water	\$2,500

WASKATENAU

Planning and Development	\$5,493
Roads and Bridges	\$11,511
Water	\$23,958

YOUNGSTOWN

Culture	\$10,000
General Administration	\$1,500
Parks, Sport and Recreation	\$8,508
Planning and Development	\$5,000
Water	\$3,961

Summer Village**Estimated Expenditures**

ARGENTIA BEACH	
General Administration	\$4,657
BETULA BEACH	
Solid Waste Management	\$3,248
BIRCH COVE	
Parks, Sport and Recreation	\$5,032
BIRCHCLIFF	
General Administration	\$3,000
Libraries	\$800
Planning and Development	\$3,000
Public Security and Safety	\$3,000
Solid Waste Management	\$852
BONDISS	
Solid Waste Management	\$8,746
BONNYVILLE BEACH	
General Administration	\$2,250
Governance	\$750
Municipal Buildings and Facilities	\$2,042
Public Security and Safety	\$500
Staff Development	\$1,000
Wastewater	\$1,500
BURNSTICK LAKE	
Roads and Bridges	\$1,694
Solid Waste Management	\$2,000
CASTLE ISLAND	
Parks, Sport and Recreation	\$3,640
CRYSTAL SPRINGS	
General Administration	\$8,486
GHOST LAKE	
Solid Waste Management	\$7,558
GOLDEN DAYS	
General Administration	\$10,076
GRANDVIEW	
General Administration	\$9,371
GULL LAKE	
Solid Waste Management	\$9,297

Summer Village**Estimated Expenditures**

HALF MOON BAY

General Administration	\$1,125
Municipal Buildings and Facilities	\$1,000
Planning and Development	\$1,000
Solid Waste Management	\$1,000
Staff Development	\$1,000

HORSESHOE BAY

General Administration	\$1,167
Governance	\$600
Public Security and Safety	\$2,920

ISLAND LAKE

Solid Waste Management	\$9,999
------------------------	---------

ISLAND LAKE SOUTH

General Administration	\$3,600
Parks, Sport and Recreation	\$3,059

ITASKA BEACH

Wastewater	\$4,136
------------	---------

JARVIS BAY

General Administration	\$2,851
Parks, Sport and Recreation	\$2,650
Public Security and Safety	\$3,000
Staff Development	\$815
Wastewater	\$1,500

KAPASIWIN

Solid Waste Management	\$3,496
Water	\$116

LAKEVIEW

Public Security and Safety	\$2,000
Solid Waste Management	\$2,041

LARKSPUR

General Administration	\$3,600
Planning and Development	\$1,398

MA-ME-O BEACH

General Administration	\$9,461
------------------------	---------

Summer Village**Estimated Expenditures**

MEWATHA BEACH	
General Administration	\$3,600
Parks, Sport and Recreation	\$3,919
NAKAMUN PARK	
Public Security and Safety	\$4,874
NORGLLENWOLD	
General Administration	\$3,500
Public Security and Safety	\$3,500
Solid Waste Management	\$2,000
Staff Development	\$454
Wastewater	\$2,100
NORRIS BEACH	
General Administration	\$5,450
PARKLAND BEACH	
Solid Waste Management	\$9,139
PELICAN NARROWS	
Solid Waste Management	\$9,130
POINT ALISON	
General Administration	\$1,000
Roads and Bridges	\$2,294
POPLAR BAY	
General Administration	\$8,336
ROCHON SANDS	
General Administration	\$1,000
Libraries	\$500
Municipal Buildings and Facilities	\$1,000
Planning and Development	\$1,977
Solid Waste Management	\$1,500
Staff Development	\$1,000
ROSS HAVEN	
General Administration	\$3,548
Libraries	\$2,800
Roads and Bridges	\$2,600

Summer Village**Estimated Expenditures**

SANDY BEACH	
General Administration	\$3,500
Governance	\$2,750
Municipal Buildings and Facilities	\$2,767
SEBA BEACH	
Solid Waste Management	\$10,348
SILVER BEACH	
Wastewater	\$6,359
SILVER SANDS	
Public Security and Safety	\$8,961
SOUTH BAPTISTE	
Solid Waste Management	\$5,531
SOUTH VIEW	
Public Security and Safety	\$6,841
SUNBREAKER COVE	
General Administration	\$2,174
Parks, Sport and Recreation	\$1,200
Public Security and Safety	\$1,400
Roads and Bridges	\$1,600
Solid Waste Management	\$2,013
SUNDANCE BEACH	
Planning and Development	\$7,818
SUNRISE BEACH	
Public Security and Safety	\$8,431
SUNSET BEACH	
Solid Waste Management	\$5,278
SUNSET POINT	
Municipal Buildings and Facilities	\$900
Roads and Bridges	\$7,396
Solid Waste Management	\$1,000
VAL QUENTIN	
Parks, Sport and Recreation	\$8,772
WAIPAROUS	
Public Security and Safety	\$5,000
Solid Waste Management	\$1,331

Summer Village

Estimated Expenditures

WEST BAPTISTE

Solid Waste Management

\$5,745

WEST COVE

Public Security and Safety

\$8,725

WHISPERING HILLS

General Administration

\$3,600

Parks, Sport and Recreation

\$5,008

WHITE SANDS

General Administration

\$9,066

YELLOWSTONE

Public Security and Safety

\$8,498

Improvement District

Estimated Expenditures

I.D. NO. 04 (WATERTON)	
Culture	\$16,753
I.D. NO. 09 (BANFF)	
Public Security and Safety	\$32,536
I.D. NO. 12 (JASPER NATIONAL PARK)	
Public Security and Safety	\$9,548
I.D. NO. 13 (ELK ISLAND)	
Roads and Bridges	\$5,959
I.D. NO. 24 (WOOD BUFFALO)	
Roads and Bridges	\$17,151
I.D. NO. 25 (WILLMORE WILDERNESS)	
Parks, Sport and Recreation	\$4,890
IMPROVEMENT DISTRICT NO. 349	
Planning and Development	\$34,770

Special Area

Estimated Expenditures

SPECIAL AREAS BOARD

Solid Waste Management

\$363,013

Metis Settlement

Estimated Expenditures

BUFFALO LAKE METIS SETTLEMENT	
General Administration	\$17,409
ELIZABETH METIS SETTLEMENT	
Culture	\$10,000
Parks, Sport and Recreation	\$7,464
KIKINO METIS SETTLEMENT	
Municipal Buildings and Facilities	\$18,357
PADDLE PRAIRIE METIS SETTLEMENT	
General Administration	\$16,838
PEAVINE METIS SETTLEMENT	
Parks, Sport and Recreation	\$17,264

Hamlet

Estimated Expenditures

BOTHA

General Administration \$28,762

WILLINGDON

General Administration \$16,262

Infrastructure Management \$10,000

Municipal Buildings and Facilities \$426

Wastewater \$10,543

Other

TOWNSITE OF REDWOOD MEADOWS ADMIN SOC

Water

Estimated Expenditures

\$21,464